



PROFESSIONAL STORAGE

CATALOGUE & PRICE

ipcom-group.pl



About Us

Since 2005, **IPCOM GROUP** has been designing and manufacturing industrial, office, medical, and telecommunication solutions for clients worldwide. We are not only a manufacturer but also a system integrator for leading communication operators, bringing together technology and reliability. What drives us is active development and passion for innovation. We deliver both standardized solutions and custom-made products, tailored to meet the exact needs of our customers. Our modern production facilities and professional team allow us to turn ideas into reality and provide comprehensive metal processing services at the highest level of quality.

- 20 years on the market
- Over **300** employees
- Over **2500** tons of processed metal per year
- **10 000** square meters of production space
- Own design office
- Service and warranty service
- Compliance with quality standards
- Over 100 modern machines in our production park



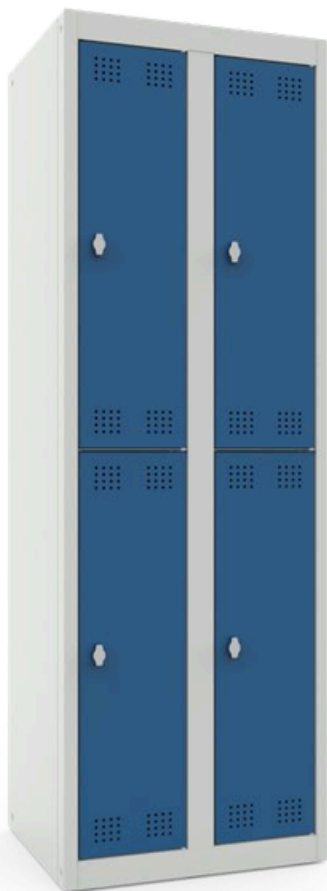
LOCKERS



NO 22-01-06 (5815-4)

Technical Specifications:

- **Dimensions (WxHxD), mm:** 600×1800×500
- **Frame:** The demountable structure allows for easy transportation and quick on-site assembly
- **Powder coating:** any RAL color
- **Metal thickness:** 0.6 mm
- **Number of doors:** 2
- **Interior configuration:** 2 shelves, 2 hanging rods and 2 coat hooks on each
- **Lock type:** cam lock
- **Coating type:** matte



NO 24-01-06 (5815-2)

Technical Specifications:

- **Dimensions (WxHxD), mm:** 600×1800×500
- **Frame:** The demountable structure allows for easy transportation and quick on-site assembly
- **Powder coating:** any RAL color
- **Metal thickness:** 0.6 mm
- **Number of doors:** 4
- **Interior configuration:** 4 hanging rods and 2 coat hooks on each
- **Lock type:** cam lock
- **Coating type:** matte



NO 24-01-08 (5815-3)

Technical Specifications:

- **Dimensions (WxHxD), mm:** 800×1800×500
- **Frame:** The demountable structure allows for easy transportation and quick on-site assembly
- **Powder coating:** any RAL color
- **Metal thickness:** 0.6 mm
- **Number of doors:** 4
- **Interior configuration:** 4 vertical partitions, 8 hanging rods and 2 coat hooks on each
- **Lock type:** cam lock
- **Coating type:** matte



NO 22-01-08 (5815-5)

Technical Specifications:

- **Dimensions (WxHxD), mm:** 800×1800×500
- **Frame:** The demountable structure allows for easy transportation and quick on-site assembly
- **Coating:** powder-coated, any color
- **Powder coating:** any RAL color
- **Metal thickness:** 0.6 mm
- **Number of doors:** 2
- **Interior configuration:** 2 shelves, 2 vertical partitions, 4 hanging rods and 2 coat hooks on each
- **Lock type:** cam lock
- **Coating type:** matte



NO 22-02-06 (5815-6)

Technical Specifications:

- **Dimensions (WxHxD), mm:** 600×1800×500
- **Frame:** The demountable structure allows for easy transportation and quick on-site assembly
- **Powder coating:** any RAL color
- **Metal thickness:** 0.6 mm
- **Number of doors :** 2
- **Interior configuration:** 2 shelves, 2 hanging rods and 2 coat hooks on each
- **Lock type:** cam lock
- **Coating type:** matte



11-01-03x18x05

- Dimensions (WxHxD), mm: 300x1800x500
- Color, RAL: 7035
- Number of doors: 1
- Number of sections: 1
- Number of shelves: 1
- Ventilation: Air vents in the door
- Locking: Equipped with a lock

11-01-04x18x05

- Dimensions (WxHxD), mm: 400x1800x500
- Color, RAL: 7035
- Number of doors: 1
- Number of sections: 1
- Number of shelves: 1
- Ventilation: Air vents in the door
- Locking: Equipped with a lock





12-01-03x18x05

- Dimensions (WxHxD), mm: 300x1800x500
- Color, RAL: 7035
- Number of doors: 2
- Number of sections: 1
- Number of shelves: 2
- Ventilation: Air vents in the door
- Locking: Equipped with a lock

11-01-04x18x05

- Dimensions (WxHxD), mm: 400x1800x500
- Color, RAL: 7035
- Number of doors: 2
- Number of sections: 1
- Number of shelves: 2
- Ventilation: Air vents in the door
- Locking: Equipped with a lock





22-01-06x18x05

- Dimensions (WxHxD), mm: 600x1800x500
- Color, RAL: 7035
- Number of doors: 2
- Number of sections: 2
- Number of shelves: 2
- Ventilation: Air vents in the door
- Locking: Equipped with a lock

22-01-08x18x05

- Dimensions (WxHxD), mm: 800x1800x500
- Color, RAL: 7035
- Number of doors: 2
- Number of sections: 2
- Number of shelves: 2
- Ventilation: Air vents in the door
- Locking: Equipped with a lock





22-01-06x18x05

- Dimensions (WxHxD), mm: 600x1800x500
- Color, RAL: 7035
- Number of doors: 4
- Number of sections: 2
- Number of shelves: 4

22-01-08x18x05

- Dimensions (WxHxD), mm: 800x1800x500
- Color, RAL: 7035
- Number of doors: 4
- Number of sections: 2
- Number of shelves: 4





11-01-40 (0043857)

Technical Specifications:

- Dimensions (WxHxD), mm: 400x1800x400
- Frame: All-welded steel construction
- Powder coating: any RAL color
- Metal thickness: 0.6 mm
- Number of doors: 1
- Door opening angle, degrees: 180
- Interior configuration: 3 shelves
- Lock type: cam lock
- Coating type: matte



22-01-081 (K-313)

Technical Specifications:

- **Dimensions (WxHxD), mm:** 810×2320×500
- **Frame:** TAIL-welded construction
- **Powder coating:** any RAL color
- **Metal thickness:** 0.6 mm
- **Number of doors :** 2
- **Interior configuration:** 4 shelves, 2 hanging rods and 4 coat hooks on each
- **Lock type:** cam lock
- **Coating type:** textured (orange peel)
- **Bench material:** natural wood



33-01-120 (K-314)

Technical Specifications:

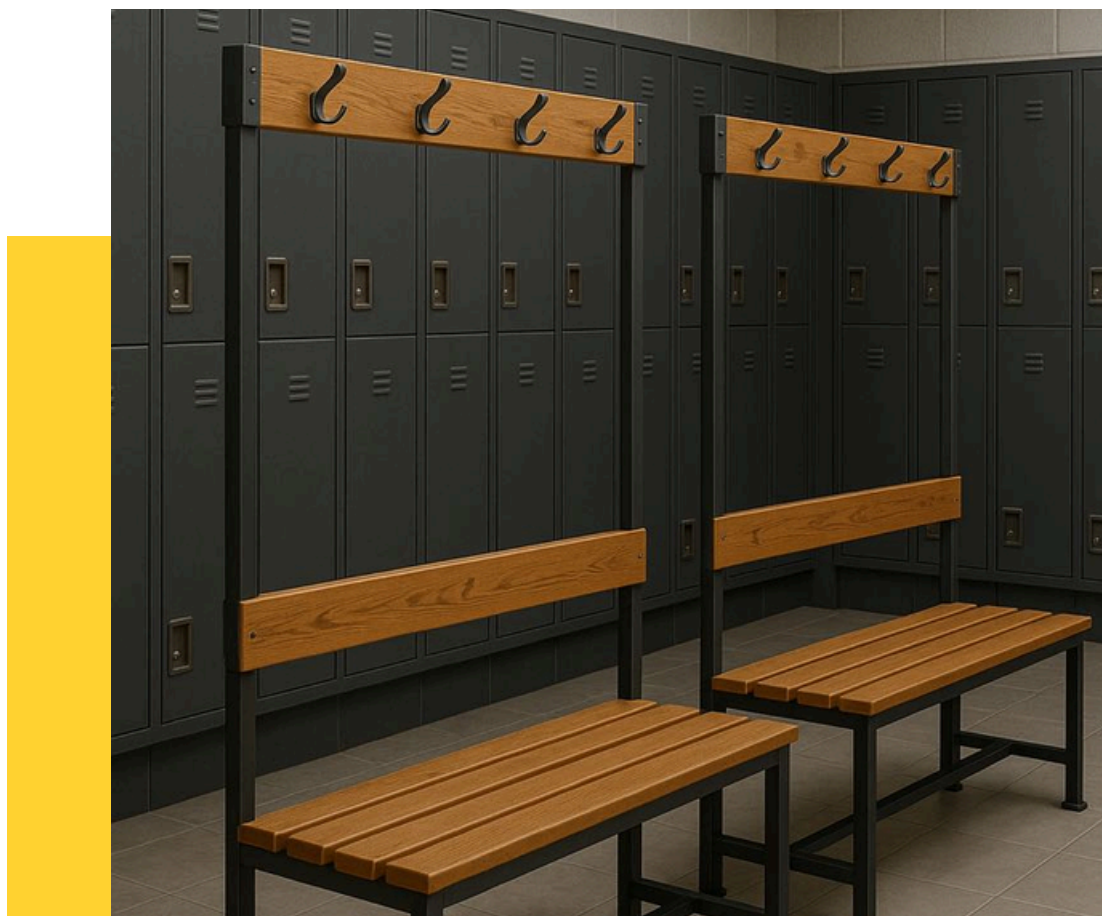
- **Dimensions (WxHxD), mm:** 1200×2320×500
- **Frame:** TAIL-welded construction
- **Powder coating:** any RAL color
- **Metal thickness:** 0.6 mm
- **Number of doors :** 3
- **Interior configuration:** 6 shelves, 3 hanging rods and 6 coat hooks on each
- **Lock type:** cam lock
- **Coating type:** textured (orange peel)
- **Bench material:** natural wood



510-01-045 (0043830)

Technical Specifications:

- Dimensions (WxHxD), mm: 1360x1720x450
- Frame: TAIL-welded construction
- Powder coating: any RAL color
- Metal thickness: 0.6 mm
- Number of doors : 10
- Interior configuration: 10 hanging rods and 20 coat hooks on each
- Lock type: electronic code, card
- Coating type: matte



LOCKER

ROOM BENCHES

LOCKER ROOM BENCHES

CB-1000



CB series – single-sided benches, length 1000 mm.

Functional and compact, with options for shoe racks, backrests, and coat hooks. Perfect for schools, gyms, fitness clubs, and employee changing rooms.



CB-1000/CB-1000-S

- **Dimensions (WxHxD), mm:** 1000×445×300
- **Frame:** all-welded steel construction for maximum durability
- **Coating:** powder-coated, color RAL 7035
- **Seat slats:** natural wood
- **Feet:** height-adjustable

CB-1000-4H/CB-1000-4H-S

- **Dimensions (WxHxD), mm:** 1000×1600×300
- **Frame:** all-welded steel construction for maximum durability
- **Coating:** powder-coated, color RAL 7035
- **Seat slats:** natural wood
- **Feet:** height-adjustable



LOCKER ROOM BENCHES

CB-1500



CB series – single-sided benches, length 1500 mm.

A longer version for enhanced seating capacity, while maintaining compact design. Available with shoe racks, backrests, and coat hooks. Suitable for schools, gyms, fitness clubs, and employee changing rooms.



CB-1500/CB-1500-S

- **Dimensions (WxHxD), mm:** 1500×445×300
- **Frame:** all-welded steel construction for maximum durability
- **Coating:** powder-coated, color RAL 7035
- **Seat slats:** natural wood
- **Feet:** height-adjustable

CB-1500-6H/CB-1500-6H-S

- **Dimensions (WxHxD), mm:** 1500×1600×300
- **Frame:** all-welded steel construction for maximum durability
- **Coating:** powder-coated, color RAL 7035
- **Seat slats:** natural wood
- **Feet:** height-adjustable



LOCKER ROOM BENCHES

CB-2000



CB series – single-sided benches, length 2000 mm.

The most spacious option in this line, providing maximum seating comfort. Can be ordered with shoe racks, backrests, and coat hooks. Designed for large locker rooms in schools, gyms, fitness clubs, and employee changing rooms.



CB-2000/CB-2000-S

- **Dimensions (WxHxD), mm:** 2000×445×300
- **Frame:** all-welded steel construction for maximum durability
- **Coating:** powder-coated, color RAL 7035
- **Seat slats:** natural wood
- **Feet:** height-adjustable

CB-2000-8H/CB-2000-8H-S

- **Dimensions (WxHxD), mm:** 2000×1600×300
- **Frame:** all-welded steel construction for maximum durability
- **Coating:** powder-coated, color RAL 7035
- **Seat slats:** natural wood
- **Feet:** height-adjustable



LOCKER ROOM BENCHES

CD-1000



CD series – double-sided benches, length 1000 mm.

Compact two-sided construction with backrests and coat hooks on both sides. Can also be equipped with shoe racks. Ideal for schools, gyms, fitness clubs, and employee changing rooms.



CD-1000-4+4H/CD-1000-4+4H-S

- **Dimensions (WxHxD), mm:** 1000×1600×690
- **Frame:** all-welded steel construction for maximum durability
- **Coating:** powder-coated, color RAL 7035
- **Seat slats:** natural wood
- **Feet:** height-adjustable

LOCKER ROOM BENCHES

CD-1500



CD series – double-sided benches, length 1500 mm.

Extended model offering more seating space while keeping a practical two-sided design. Available with shoe racks, backrests, and coat hooks on both sides. Perfect for medium and large locker rooms in schools, gyms, fitness clubs, and workplaces.



CD-1500-6+6H/CD-1500-6+6H-S

- **Dimensions (WxHxD), mm:** 1500×1600×690
- **Frame:** all-welded steel construction for maximum durability
- **Coating:** powder-coated, color RAL 7035
- **Seat slats:** natural wood
- **Feet:** height-adjustable

LOCKER ROOM BENCHES

CD-2000



CD series – double-sided benches, length 2000 mm.

The most spacious bench in this line, designed for maximum capacity and comfort. Features double backrests and coat hooks on both sides, with optional shoe racks. Best choice for large sports complexes, gyms, and industrial facilities.



CD-2000-8+8H/CD-2000-8+8H-S

- **Dimensions (WxHxD), mm:** 2000×1600×690
- **Frame:** all-welded steel construction for maximum durability
- **Coating:** powder-coated, color RAL 7035
- **Seat slats:** natural wood
- **Feet:** height-adjustable



OFFICE

CABINETS

OFFICE CABINET
METAL FILING CABINET



SHSB 12-02-06

- Dimensions (WxHxD), mm: 600x1800x400
- Color, RAL: 7035
- Steel Thickness: 0.5 mm
- Number of doors: 2
- Number of sections: 1
- Number of shelves: 4

SHSB 12-02-08

- Dimensions (WxHxD), mm: 800x1800x400
- Color, RAL: 7035
- Steel Thickness: 0.5 mm
- Number of doors: 2
- Number of sections: 1
- Number of shelves: 4



OFFICE CABINET
METAL FILING CABINET



SHSB 11-01-04

- Dimensions (WxHxD), mm: 400x1800x400
- Color, RAL: 7035
- Steel Thickness: 0.5 mm
- Number of doors: 1
- Number of sections: 1
- Number of shelves: 4

ASHB-11-01-04

- Dimensions (WxHxD), mm: 400x450x400
- Color, RAL: 7035
- Steel Thickness: 0.5 mm
- Number of doors: 1
- Number of sections: 1
- Number of shelves: 1



OFFICE CABINET
METAL FILING CABINET



ASHB-12-02-06

- Dimensions (WxHxD), mm: 600x1800x400
- Color: RAL: 7035
- Steel Thickness: 0.5 mm
- Number of doors: 2
- Number of sections: 1
- Number of shelves: 4

ASHB-12-02-08

- Dimensions (WxHxD), mm: 800x450x400
- Color, RAL: 7035
- Steel Thickness: 0.5 mm
- Number of doors: 2
- Number of sections: 1
- Number of shelves: 1



OFFICE CABINET METAL FILING CABINET



SHSB 12-02-08

- Dimensions (WxHxD), mm: 800x900x400
- Color, RAL: 7035
- Steel Thickness: 0.5 mm
- Number of doors: 1
- Number of sections: 1
- Number of shelves: 2

FC 1U.025

- Dimensions (WxHxD), mm: 315x255x382
- Color, RAL: 7035
- Drawer dimensions are designed for storing A4 size folders
- Door and body thickness, mm: 0.8
- Permissible load: 30 kg
- Number of boxes: 1



OFFICE CABINET
METAL FILING CABINET



FC 1.025

- Dimensions (WxHxD), mm: 315x255x585
- Color, RAL: 7035
- Drawer dimensions are designed for storing A4 size folders
- Door and body thickness, mm: 0.8
- Number of boxes: 1

FC 3.058

- Dimensions (WxHxD), mm: 561x583x602
- Color, RAL: 7035
- Number of boxes: 3
- Lock type: Flagging
- Weight, kg: 38.6



OFFICE CABINET
METAL FILING CABINET



FC 3.097

- Dimensions (WxHxD), mm: 488x973x602
- Color, RAL: 7035
- Number of boxes: 3
- Lock type: Flagging

FC 4.075

- Dimensions (WxHxD), mm: 561x746x602
- Color, RAL: 7035
- Number of boxes: 4
- Lock type: Flagging
- Weight, kg: 48.8



OFFICE CABINET
METAL FILING CABINET



FC 4.127

- Dimensions (WxHxD), mm: 488x1266x602
- Color, RAL: 7035
- Number of boxes: 4
- Lock type: Flagging

FC 5.091

- Dimensions (WxHxD), mm: 561x909x602
- Color, RAL: 7035
- Number of boxes: 5
- Lock type: Flagging
- Weight, kg: 59.1



OFFICE CABINET
METAL FILING CABINET



FC 5.156

- Dimensions (WxHxD), mm: 488x1559x602
- Color, RAL: 7035
- Number of boxes: 5
- Lock type: Flagging

FC 5A.156

- Dimensions (WxHxD), mm: 900x1559x497
- Color, RAL: 7035
- Number of boxes: 5
- Lock type: Flagging





SAFES

Energy Violet



- **Dimensions (WxHxD):** 350x250x280 mm
- **Wall thickness:** 1.5 mm
- **Door thickness:** 4 mm
- **Model weight:** 12 kg
- **Lock type:** Electronic
- **Color:** Purple

Ferocon Energy 25E

- **Dimensions (WxHxD):** 350x250x280 mm
- **Wall thickness:** 1.5 mm
- **Door thickness:** 4 mm
- **Model weight:** 12 kg
- **Lock type:** Electronic
- **Color:** White





Ferocon Energy 30E

- **Dimensions (WxHxD):** 380x300x300 mm
- **Wall thickness:** 1.5 mm
- **Door thickness:** 4 mm
- **Model weight:** 14 kg
- **Lock type:** Electronic
- **Color:** Gray

Ferocon Energy 40E

- **Dimensions (WxHxD):** 400x400x360 mm
- **Wall thickness:** 1.5 mm
- **Door thickness:** 4 mm
- **Model weight:** 19,5 kg
- **Lock type:** Electronic
- **Color:** White





Ferocon Energy 65E

- Dimensions (WxHxD): 435x650x360 mm
- Wall thickness: 1.5 mm
- Door thickness: 4 mm
- Model weight: 32 kg
- Lock type: Electronic
- Color: White

Ferocon Energy 25K

- Dimensions (WxHxD): 350x250x280 mm
- Wall thickness: 1.5 mm
- Door thickness: 4 mm
- Model weight: 11 kg
- Lock type: Key
- Color: White





Ferocon Energy 30K

- **Dimensions (WxHxD):** 380x300x300 mm
- **Wall thickness:** 1.5 mm
- **Door thickness:** 4 mm
- **Model weight:** 13,5 kg
- **Lock type:** Key
- **Color:** Gray

Ferocon Energy 40K

- **Dimensions (WxHxD):** 400x400x360 mm
- **Wall thickness:** 1.5 mm
- **Door thickness:** 4 mm
- **Model weight:** 19 kg
- **Lock type:** Key
- **Color:** Gray



SAFES FURNITURE SAFES SERIES BS/ES



BS-15K.7035



- Dimensions (WxHxD): 200x150x170 mm
- Wall thickness: 1.2 mm
- Door thickness: 2 mm
- Model weight: 2.1 kg
- Lock type: Key
- Color: Gray

BS-17K.9005

- Dimensions (WxHxD): 230x170x170 mm
- Wall Thickness: 1.5mm
- Door thickness: 2.5 mm
- Model weight: 2.7 kg
- Lock type: Key
- Color: Black



SAFES
FURNITURE SAFES SERIES BS/ES



BS-20KD.7035



- **Dimensions (WxHxD):** 310x200x200 mm
- **Wall thickness:** 1 mm
- **Door thickness:** 2 mm
- **Model weight:** 3.6 kg
- **Lock type:** Key
- **Color:** Gray

BS-20K.9005

- **Dimensions (WxHxD):** 310x200x200 mm
- **Wall thickness:** 1 mm
- **Door thickness:** 2.5 mm
- **Model weight:** 4.3 kg
- **Lock type:** Key
- **Color:** Black



SAFES
FURNITURE SAFES SERIES BS/ES



BS-23K



- **Dimensions (WxHxD):** 360x165x320 mm
- **Wall thickness:** 1 mm
- **Door thickness:** 3 mm
- **Model weight:** 4.9 kg
- **Lock type:** Key
- **Color:** Black

BS-25KD

- **Dimensions (WxHxD):** 310x250x200 mm
- **Wall thickness:** 1.2 mm
- **Door thickness:** 2.5 mm
- **Model weight:** 4 kg
- **Lock type:** Key
- **Color:** Gray



SAFES FURNITURE SAFES SERIES BS/ES



BS-25K

- Dimensions (WxHxD): 350x250x250 mm
- Wall thickness: 1.2 mm
- Door thickness: 2 mm
- Model weight: 5.4 kg
- Lock type: Key
- Color: Black

BS-17E.9005

- Dimensions (WxHxD): 230x170x170 mm
- Wall thickness: 1.2-1.5mm
- Door thickness: 2 mm
- Model weight: 2.8kg
- Lock type: Electronic
- Color: Black



SAFES
FURNITURE SAFES SERIES BS/ES



BS-20E



- Dimensions (WxHxD): 310x200x200 mm
- Wall thickness: 1.2 mm
- Door thickness: 3 mm
- Model weight: 5 kg
- Lock type: Electronic
- Color: Black

BS-21E

- Dimensions (WxHxD): 310x200x200 mm
- Wall thickness: 1.2 mm
- Door thickness: 3 mm
- Model weight: 5 kg
- Lock type: Electronic
- Color: Gray



SAFES
FURNITURE SAFES SERIES BS/ES



BS-24E



- Dimensions (WxHxD): 442x200x380 mm
- Wall thickness: 1.5 mm
- Door thickness: 2.5 mm
- Model weight: 7.8 kg
- Lock type: Electronic
- Color: Black

BS-25E

- Dimensions (WxHxD): 350x250x250 mm
- Wall thickness: 1 mm
- Door thickness: 3 mm
- Model weight: 5 kg
- Lock type: Electronic
- Color: Black



SAFES FURNITURE SAFES SERIES BS/ES



BS-30E

- Dimensions (WxHxD): 380x300x300 mm
- Wall thickness: 1 mm
- Door thickness: 3 mm
- Model weight: 8.8 kg
- Lock type: Electronic
- Color: Beige

BS-25D

- Dimensions (WxHxD): 350x250x250 mm
- Wall thickness: 1.2 mm Door thickness: 3 mm
- Model weight: 5.4 kg
- Lock type: Electronic
- Color: Black
-
-



SAFES
FURNITURE SAFES SERIES BS/ES



BS-25MK

- **Dimensions (WxHxD):** 350x250x320 mm
- **Wall thickness:** 1 mm
- **Door thickness:** 3 mm
- **Model weight:** 5.4 kg
- **Lock type:** Key
- **Color:** Black

BS-38K.P1.9005

- **Dimensions (WxHxD):** 350x380x360 mm
- **Wall thickness:** 1.5 mm
- **Door thickness:** 2.5 mm
- **Model weight:** 13 kg
- **Lock type:** Key
- **Color:** Black



SAFES
FURNITURE SAFES SERIES BS/ES



ES-20K

- **Dimensions (WxHxD):** 320x200x260 mm
- **Wall thickness:** 2 mm
- **Door thickness:** 4 mm
- **Model weight:** 8 kg
- **Lock type:** Key
- **Color:** Black

ES-30K

- **Dimensions (WxHxD):** 450x300x350 mm
- **Wall thickness:** 2 mm
- **Door thickness:** 4 mm
- **Model weight:** 17.8 kg
- **Lock type:** Key
- **Color:** Black





E-100K2

- **Dimensions (WxHxD):** 265x995x225 mm
- **Case thickness:** 0.8 mm
- **Door thickness:** 1 mm
- **Model weight:** 12.5 kg
- **Lock type:** Key
- **Presence of a tracer:** Yes

E-130K2

- **Dimensions (WxHxD):** 265x1300x225 mm
- **Case thickness:** 0.8 mm
- **Door thickness:** 1.2 mm
- **Model weight:** 16 kg
- **Lock type:** Key
- **Presence of a tracer:** Yes



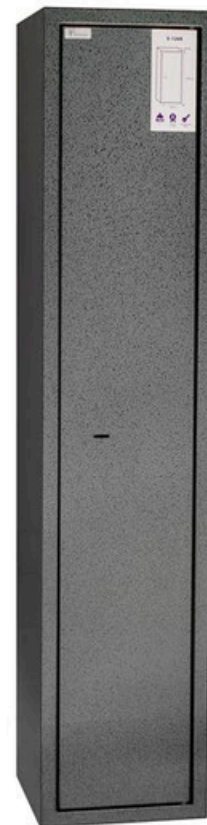


E-135K2

- **Dimensions (WxHxD):** 300x1350x200 mm
- **Case thickness:** 0.8 mm
- **Door thickness:** 1.2 mm
- **Model weight:** 15.5 kg
- **Lock type:** Key
- **Presence of a tracer:** Yes

E-126K

- **Dimensions (WxHxD):** 265x1245x250 mm
- **Case thickness:** 1 mm
- **Door thickness:** 1.2 mm
- **Model weight:** 21 kg
- **Lock type:** Key
- **Presence of a tracer:** Yes





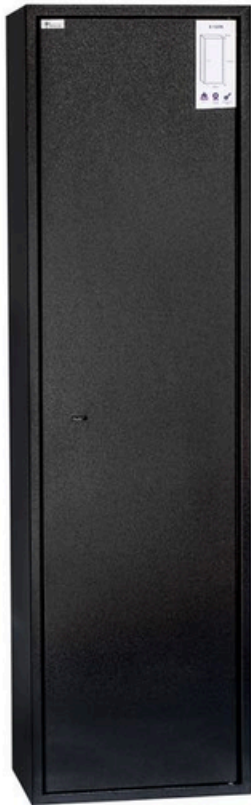
Barett

- **Dimensions (WxHxD):** 300x1500x200 mm
- **Case thickness:** 0.8 mm
- **Door thickness:** 1.2 mm
- **Model weight:** 16 kg
- **Lock type:** Key
- **Presence of a tracer:** No

Vertex

- **Dimensions (WxHxD):** 300x1300x200 mm
- **Case thickness:** 0.8 mm
- **Door thickness:** 1.2 mm
- **Model weight:** 16 kg
- **Lock type:** Electronic-mechanical
- **Presence of a tracer:** Yes





E-137K1

- **Dimensions (WxHxD):** 390x1370x250 mm
- **Case thickness:** 1.2 mm
- **Door thickness:** 1.2 mm
- **Model weight:** 29.3 kg
- **Lock type:** Key
- **Presence of a tracer:** Yes

E-139K2

- **Dimensions (WxHxD):** 390x1370x250 mm
- **Case thickness:** 1.2 mm
- **Door thickness:** 2 mm
- **Model weight:** 41 kg
- **Lock type:** Key
- **Presence of a tracer:** Yes





E-139K1

- **Dimensions (WxHxD):** 390x1370x250 mm
- **Case thickness:** 1.2 mm
- **Model weight:** 41 kg
- **Lock type:** Electronic
- **Presence of a tracer:** No

E-148K2

- **Dimensions (WxHxD):** 320x1480x300 mm
- **Internal WxHxD:** 317x1250x214
- **Case thickness:** 1.2 mm
- **Door thickness:** 2 mm
- **Model weight:** 38 kg
- **Lock type:** Two key safes One electronic lock
- **Presence of a tracer:** Yes





E-100K2

- **Dimensions (WxHxD):** 265x995x225 mm
- **Case thickness:** 0.8 mm
- **Door thickness:** 1 mm
- **Model weight:** 12.5 kg
- **Lock type:** Key
- **Presence of a tracer:** Yes

E-140K

- **Dimensions (WxHxD):** 500x1370x380 mm
- **Case thickness:** 2 mm
- **Door thickness:** 4 mm
- **Model weight:** 69,5 kg
- **Lock type:** Key
- **Presence of a tracer:** Yes



SAFES
OFFICE SAFES SERIES BS/ES



BS-46K

- **Dimensions (WxHxD):** 440x460x380 mm
- **Case thickness:** 1.2 mm
- **Door thickness:** 1.2 mm
- **Model weight:** 18 kg
- **Lock type:** Key
- **Presence of a tracer:** No

BS-52K.P1.7035

- **Dimensions (WxHxD):** 400x520x360 mm
- **Case thickness:** 1.2 mm
- **Door thickness:** 2.5 mm
- **Model weight:** 17,5 kg
- **Lock type:** Key
- **Presence of a tracer:** No



SAFES
OFFICE SAFES SERIES BS/ES



BS-52E

- **Dimensions (WxHxD):** 400x520x360 mm
- **Case thickness:** 1.2 mm
- **Door thickness:** 2.5 mm
- **Model weight:** 19 kg
- **Lock type:** Electronic
- **Presence of a tracer:** No

BS-63K.T1.P1.9005

- **Dimensions (WxHxD):** 400x630x380 mm
- **Case thickness:** 1.2 mm
- **Door thickness:** 1.2 mm
- **Model weight:** 33 kg
- **Lock type:** Key
- **Presence of a tracer:** Yes



SAFES
OFFICE SAFES SERIES BS/ES



ES-65K

- **Dimensions (WxHxD):** 460x630x390 mm
- **Case thickness:** 2 mm
- **Door thickness:** 4 mm
- **Model weight:** 33 kg
- **Lock type:** Key
- **Presence of a tracer:** Yes

EC-85K

- **Dimensions (WxHxD):** 400x850x380 mm
- **Case thickness:** 2 mm
- **Door thickness:** 4 mm
- **Model weight:** 40 kg
- **Lock type:** Key
- **Presence of a tracer:** Yes



SAFES
OFFICE SAFES SERIES BS/ES



ES-95K

- **Dimensions (WxHxD):** 400x950x380 mm
- **Case thickness:** 2 mm
- **Door thickness:** 4 mm
- **Model weight:** 44 kg
- **Lock type:** Key
- **Presence of a tracer:** Yes

ES-130K2.T1.P2.9005

- **Dimensions (WxHxD):** 500x1300x400 mm
- **Case thickness:** 2 mm
- **Door thickness:** 4 mm
- **Model weight:** 72 kg
- **Lock type:** Key
- **Presence of a tracer:** Yes



SAFES
OFFICE SAFES SERIES BL



BL-65K.T1.P1.7035

- **Dimensions (WxHxD):** 460x650x340 mm
- **Case thickness:** 1.2 mm
- **Door thickness:** 1.2 mm
- **Model weight:** 18 kg
- **Lock type:** Key
- **Presence of a tracer:** Yes

BL-65E.T1.P1.7035

- **Dimensions (WxHxD):** 460x650x340 mm
- **Case thickness:** 1.2 mm
- **Door thickness:** 1.2 mm
- **Model weight:** 19 kg
- **Lock type:** Electronic
- **Presence of a tracer:** Yes
- **Color:** Gray



SAFES
OFFICE SAFES SERIES BL



BL-87K. T1.P1.7035

- Dimensions (WxHxD): 460x870x340 mm
- Case thickness: 1.2 mm
- Door thickness: 1.2 mm
- Model weight: 22 kg
- Lock type: Key
- Presence of a tracer: Yes

BL-87E.T1.P1.7035

- Dimensions (WxHxD): 460x870x340 mm
- Case thickness: 1.2 mm
- Door thickness: 1.2 mm
- Model weight: 23 kg
- Lock type: Electronic
- Presence of a tracer: Yes
- Color: Gray



SAFES
OFFICE SAFES SERIES BL



BL-125K. T1.P2.7035

- Dimensions (WxHxD): 460x1252x340 mm
- Case thickness: 1.2 mm
- Door thickness: 1.2 mm
- Model weight: 37 kg
- Lock type: Key
- Presence of a tracer: Yes

BL-125E.T1.P2.7035

- Dimensions (WxHxD): 460x1252x340 mm
- Case thickness: 1.2 mm
- Door thickness: 1.2 mm
- Model weight: 37 kg
- Lock type: Electronic
- Presence of a tracer: Yes



SAFES
OFFICE SAFES SERIES BL



BL-127K1E1.T1.P2.7035

- **Dimensions (WxHxD):** 460x1275x340 mm
- **Case thickness:** 1.2 mm
- **Door thickness:** 1.2 mm
- **Model weight:** 34.5 kg
- **Lock type:** Electronic and Key Lock
- **Presence of a tracer:** Yes

BL-127K2.T1.P2.7035

- **Dimensions (WxHxD):** 460x1275x340 mm
- **Case thickness:** 1.2 mm
- **Door thickness:** 1.2 mm
- **Model weight:** 33 kg
- **Lock type:** Key
- **Presence of a tracer:** Yes



SAFES
OFFICE SAFES SERIES BL



BL-150K2E1.T1.P2.7035

- **Dimensions (WxHxD):** 460x1500x340 mm
- **Case thickness:** 1.2 mm
- **Door thickness:** 1.2 mm
- **Model weight:** 39.5 kg
- **Lock type:** Two key safe locks One electronic lock
- **Presence of a tracer:** 2

BL-185K.P4.7035

- **Dimensions (WxHxD):** 460x1800x340 mm
- **Case thickness:** 1.2 mm
- **Door thickness:** 1.2 mm
- **Model weight:** 45 kg
- **Lock type:** Key
- **Presence of a tracer:** Yes



SAFES OFFICE SAFES SERIES OLS



OLS-PL-30.K



- Dimensions (WxHxD): 450x300x350 mm
- Case thickness: 2 mm
- Door thickness: 6 mm
- Model weight: 20 kg
- Lock type: Key Lowe&Fletcher
- Presence of a tracer: No

OLS-PL-45.K

- Dimensions (WxHxD): 450x450x350 mm
- Case thickness: 2 mm
- Door thickness: 6 mm
- Model weight: 26 kg
- Lock type: Key
- Presence of a tracer: No



SAFES OFFICE SAFES SERIES OLS



OLS-PL-65.K

- Dimensions (WxHxD): 450x650x350 mm
- Case thickness: 2 mm
- Door thickness: 6 mm
- Model weight: 39 kg
- Lock type: Key
- Presence of a tracer: Yes

OLS-PL-105.K

- Dimensions (WxHxD): 450x1050x350 mm
- Case thickness: 2 mm
- Door thickness: 6 mm
- Model weight: 59.2 kg
- Lock type: Key
- Presence of a tracer: Yes



SAFES BUILT-IN SAFES SERIES WS



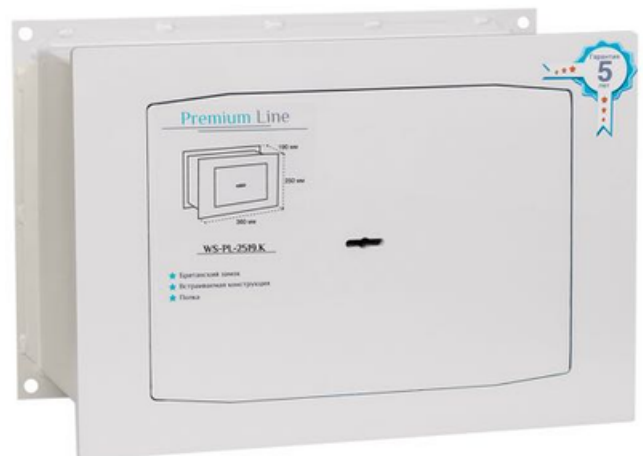
WS-PL-2116



- Dimensions (WxHxD): 300x210x160 mm
- Case thickness: 2 mm
- Door thickness: 8 mm
- Model weight: 39 kg
- Lock type: Mechanical

WS-PL-2519.K

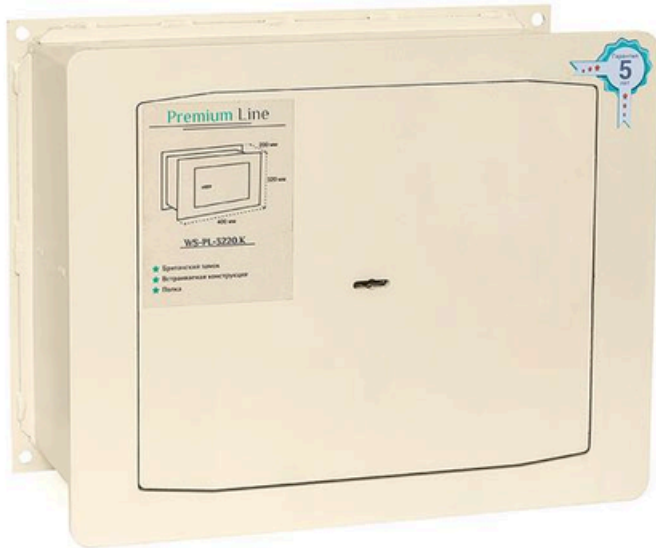
- Dimensions (WxHxD): 360x250x190 mm
- Case thickness: 2 mm
- Door thickness: 8 mm
- Model weight: 13 kg
- Lock type: Mechanical



SAFES BUILT-IN SAFES SERIES WS



WS-PL-3220.K



- Dimensions (WxHxD): 400x320x200 mm
- Case thickness: 2 mm
- Door thickness: 8 mm
- Model weight: 18.2 kg
- Lock type: Mechanical

WS-PL-3227.K

- Dimensions (WxHxD): 430x320x270 mm
- Case thickness: 2 mm
- Door thickness: 8 mm
- Model weight: 21.5 kg
- Lock type: Mechanical



SAFES
BUILT-IN SAFES SERIES VSB



VSB-1818.K



- **Dimensions (WxHxD):** 250x180x180 mm
- **Case thickness:** 1.2 mm
- **Door thickness:** 6 mm
- **Model weight:** 5.2 kg
- **Lock type:** Key safe lock

VSB-2518.K

- **Dimensions (WxHxD):** 300x250x180 mm
- **Case thickness:** 1.4 mm
- **Door thickness:** 6 mm
- **Model weight:** 7.7 kg
- **Lock type:** Key



SAFES BUILT-IN SAFES SERIES VSB



VSB-2518.E



- Dimensions (WxHxD): 300x250x180 mm
- Case thickness: 1.4 mm
- Door thickness: 6 mm
- Model weight: 8 kg
- Lock type: Electronic

VSB-3018.K

- Dimensions (WxHxD): 400x300x180 mm
- Case thickness: 1.4 mm
- Door thickness: 6 mm
- Model weight: 11.1 kg
- Lock type: Key





BINS

FOR COLLECTING BOTTLES

BINS FOR PLASTIC BOTTLES



Standard

- **Dimensions (H×W×D):** 1800 × 1000 × 1000 mm
- **Construction:** Modular
- **Metal thickness of frame:** 1.4 mm
- **Metal thickness of slats:** 0.8 mm
- **Color:** RAL 1023 (or any other)
- **Internal volume:** 1.6 m³
- **Locking:** Padlock (not included)

Reinforced

- **Dimensions (H×W×D):** 1800 × 1000 × 1000 mm
- **Construction:** Modular
- **Metal thickness of frame:** 1.8 mm
- **Metal thickness of slats:** 1.2 mm
- **Color:** RAL 1023 (or any other)
- **Internal volume:** 1.6 m³
- **Locking:** Padlock (not included)



BINS FOR PLASTIC BOTTLES



Galvanized

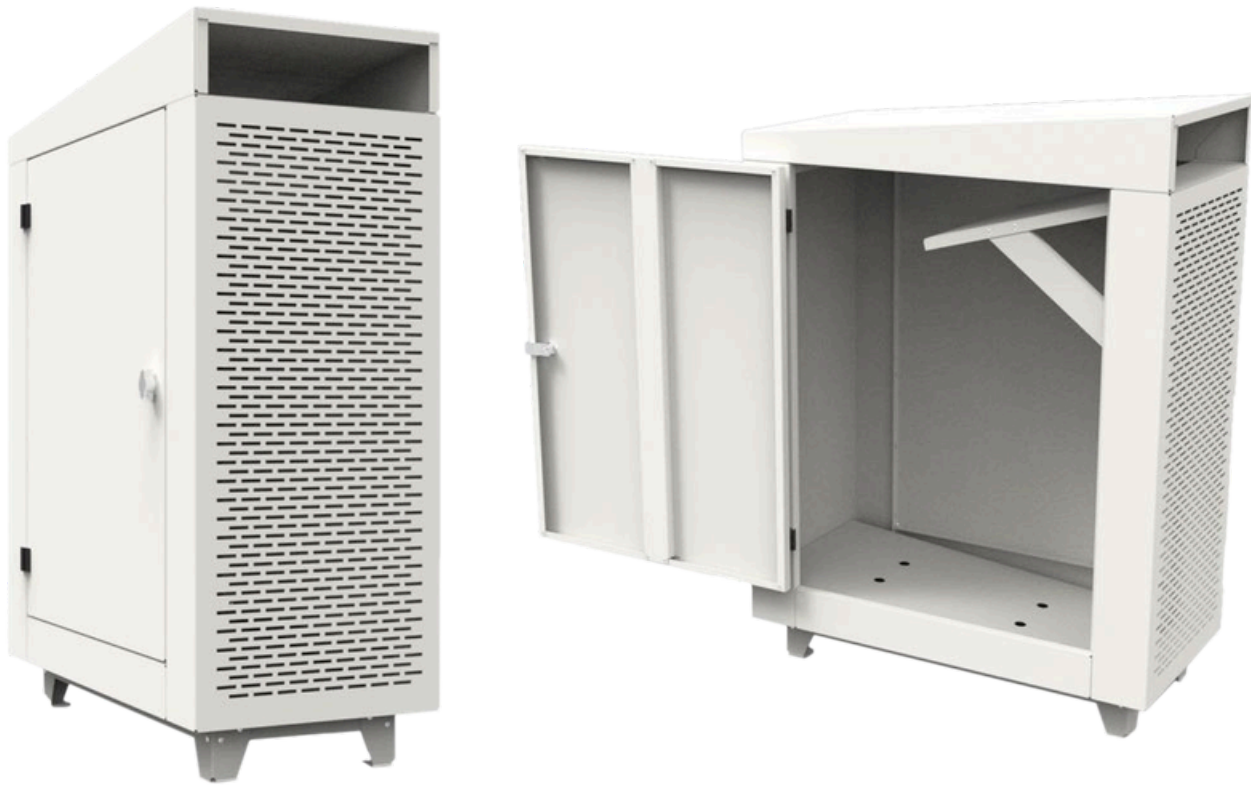
- **Dimensions (H×W×D):** 1800 × 1000 × 1000 mm
- **Construction:** Modular
- **Metal thickness of frame:** 1.5 mm
- **Metal thickness of slats:** 0.8 mm
- **Color:** RAL 1023 (or any other)
- **Internal volume:** 1.6 m³
- **Locking:** Padlock (not included)

Galvanized (Reinforced)

- **Dimensions (H×W×D):** 1800 × 1000 × 1000 mm
- **Construction:** Modular
- **Metal thickness of frame:** 2.0 mm
- **Metal thickness of slats:** 1.2 mm
- **Color:** RAL 1023 (or any other)
- **Internal volume:** 1.6 m³
- **Locking:** Padlock (not included)



BINS FOR COLLECTING BOTTLES AND CANS



KS-PET container

- Dimensions (H×W×D): 1800 × 1000 × 1000 mm
- Construction: Modular
- Metal thickness of frame: 2.0 mm (galvanized steel)
- Body metal thickness: 1.0 mm (galvanized steel)
- Color: RAL 7037 (or any other)
- Internal volume: 0.32 m³
- Locking: cam lock



THANK YOU

IPCOM GROUP Sp. z o. o.
info@ipcom-group.pl
+48-57-35-69-079
ipcom-group.pl