

---

**MEDICAL AND LABORATORY  
FURNITURE FROM THE  
MANUFACTURER**



# MEDICAL FURNITURE

MEDLABSOLUTION

## COMPANY STRUCTURE:



Medical and laboratory  
furniture



Metal furniture and safes



Integrated  
telecommunications  
solutions



ipcom  
group of companies

IPCOM | ROADS

Intelligent transportation  
systems



WAGA

Intelligent weight and  
dimensional control systems  
control



DOZOR

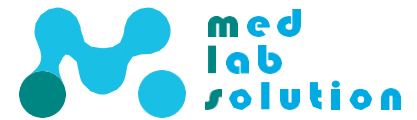
Monitoring and detection  
system for road violations



SmartParking

The system of accounting for  
paid parking in the city

# ABOUT US







IPCOM Group has been part of the global telecommunications, metal industrial, office and medical furniture market for more than 15 years and is a systems integrator for major telecommunications operators:



We are actively developing in all our areas and offer the best standard and customized solutions, a new concept of affordable, practical and at the same time technologically advanced products.

IPCOM Group is a young and ambitious team, a reliable and responsible partner, ready to solve any problem and achieve results.

a responsible partner, ready to solve any problem and achieve results. We encourage innovation and develop rapidly, improving technologies and solutions in accordance with the goals of our partners. Thanks to the flexibility of our production, we are able to respond quickly to changing market needs and growing demands. Continuous production modernization and process improvement allow us to grow and develop in new directions every year. All our development limits are limited only by our imagination, we are always 2 steps ahead.

 <b>More than 15 years on the market</b>	 <b>More than 300 employees</b>	 <b>More than 2,500 tons of metal recycled annually</b>
 <b>10 thousand m2 of production area</b>	 <b>In-house design office</b>	 <b>Service and warranty support</b>
 <b>Compliance with state standards</b>	 <b>ISO 9001:2015 quality management system</b>	 <b>ISO 14001:2015 environmental management system.</b>

## PRODUCTION CAPACITY

More than 100 machines in the park

 <b>Laser cutting complex</b>	 <b>Sheet metal forming machines</b>	 <b>Coordination of punching presses</b>	 <b>Modern assembly workshop</b>	 <b>Automated painting line</b>
---	--	--	--	---



# MEDICAL FURNITURE

MEDLABSOLUTION

## IPCOM TELECOMMUNICATION



Our IPCOM company presents new solutions and integrated solutions for mobile operators, ISPs, data centers and many other partners that shape the telecommunications market. Our products: high-tech server racks and accessories, vandal-proof boxes, all-weather, climate and data center solutions, power systems, everything you need to build telecom networks up to the last mile.

## FEROCON METAL FURNITURE



TM Ferocon is part of the IPCOM group of companies and is a major manufacturer of metal office and industrial furniture. Metal office and industrial furniture, security systems, storage systems, medical and laboratory furniture, as well as other metal products. We are a global supplier to all major DIY chains in Ukraine and Europe:



## ITS «IPCOMROADS»



The ITS project is part of the IPCOM group of companies, a major manufacturer and integrator of automated road weight and dimensional control systems, urban parking management platforms, and traffic violation monitoring and detection systems.

## MEDLABSOLUTION



Medlabsolution is one of IPCOM Group's largest business areas. We produce only certified medical and laboratory furniture and have our own design office, which allows us to keep up with the spirit of the times and often even be ahead of it. We can also develop an individual product according to customer requests. The capabilities of our own plant allow us to produce any product from the catalog (assortment), under our own brand Medlabsolution or under another TM at the customer's request in the shortest possible time. We value our customers very much, so we produce only high quality products.

## ABOUT US 2

- Company structure.....2
- Company history .....3

## SECTION 1: MEDICAL BEDS 6

- Functional medical beds .....8
- Electric medical bed .....14
- Bed accessories .....15

## SECTION 2: MEDICAL CABINETS 16

- Medical bedside tables .....18
- Mobile medical cabinets .....19

## SECTION 3: MEDICAL CABINETS 20

- Medical cabinets for medicines .....22
- Medical cabinets for inventory .....23

## SECTION 4: MEDICAL TABLES 24

- Unit and blood collection tables .....26
- Medical instrument tables .....27
- Handling and surgical tables .....28

## SECTION 5: RECLINERS AND MEDICAL BANQUETS 30

- Medical couches .....32
- Medical banquetts .....33

## SECTION 6: SPECIAL ACCESSORIES 34

- Medical Stands .....36
- Screens and first aid kits .....37
- Medical carts .....38
- Medical steps .....39



# SECTION 1: MEDICAL BEDS



## Medical beds

Medlabsolution medical beds are specially designed models, taking into account all the requirements and specifics of operation in medical institutions. The main application is in inpatient hospital conditions. The use of beds manufactured by MLS will not only make treatment and rehabilitation more comfortable, but also facilitate the process of patient care for medical personnel.

A peculiarity of the medical bed is the segmented bed, which allows the position of the head, legs and lower back to be fixed at any angle, as well as the possibility of installing adjustable handrails, railings and castors.

Our models can be equipped with a remote control, which allows you to independently control the position of the sectional, electrical devices in the room and call a nurse if necessary.

Medlabsolution medical beds are widely used in hospitals, rehabilitation centers, private clinics, maternity hospitals or nursing homes. They can also be used at home if you need to provide care for seriously ill patients.

### Mechanical medical beds

Ta kategoria naszych łóżek jest wyposażona w prosty mechanizm, w którym poziom podnośnika segmentowego jest ustawiany ręcznie. W tym celu stosowane są konwencjonalne ograniczniki przesuwne. Łóżka mechaniczne Medlabsolution mogą być wyposażone w zdejmowane boki i bariery, aby zapewnić swobodny dostęp do pacjenta.

## Worm drive medical beds

In this type of Medlabsolution beds, changing the position of sections is done similarly to mechanical models - manually, but instead of sliding stops, screw levers are installed. This method of adjustment does not require much effort, which is an undeniable advantage.

## Electric medical beds

A modern solution for bedridden or post-surgical patients is a functional electrically controlled bed from Medlabsolution. Using the remote control, the patient can adjust the height of the headboard or foot section without assistance. Depending on the model, the remote can be used to adjust the lighting in the room, summon a nurse or set the temperature of the air conditioner.

The independence to create one's own comfort has a positive effect on the patient's condition, can speed up rehabilitation, and can even simplify the process of care and performing necessary treatments. Our electric beds have several control modes. Sections can be adjusted individually, simultaneously or only a specific part.



# MEDICAL BEDS

## SERIES: MLF



### Functional single-segment bed /

Technical characteristics :	
Dimensions (W x H x D):	2100x900x900 mm
Bed with mattress:	2000x900 mm
Height of the bed from the floor :	500 mm
Bed:	P-like laths (1 mm), 20 pcs.
Bed base :	50x25 mm profiled tube
Drive mechanism :	-

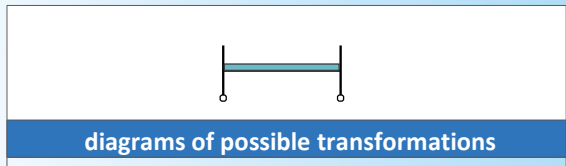
### MLF-101.1 (economy)



\* Dimensions are given with bumpers and wheels

#### Optional :

- adjustable leg height
- end cover made of chipboard
- "Economy" end cap
- wedge type connection "



### Functional single-segment bed /

Technical characteristics :	
Dimensions (W x H x D):	2100x900x900 mm
Bed with mattress :	2000x900 mm
Height of the bed from the floor : :	500 mm
Bed:	P-like laths (1 mm), 20 pcs.
Bed base:	- 50x25 mm profiled tube
Drive mechanism :	comb (0-70):

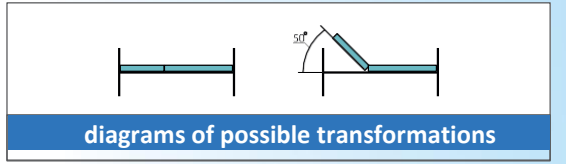
### MLF-101.2 (economy)



\* Dimensions are given with bumpers and wheels

#### Optional :

- adjustable leg height
- end cover made of chipboard
- "Economy" end cap
- wedge type connection "







# MEDICAL BEDS

## SERIES: MLF

### Functional single-segment bed /

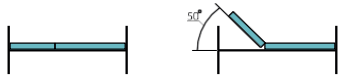
#### Technical characteristics :

Dimensions (W x H x D):	2100x900x900 mm
Bed with mattress :	2000x900 mm
Bed height from the floor : :	500 mm
Bed:	P-like laths (1 mm), 20 pcs.
Bed base:	50x25 mm profiled tube
Drive mechanism:	- worm mechanism (0-70)

\* Dimensions are given with bumpers and wheels

#### Optional :

- adjustable leg height
- end cover made of chipboard
- "Economy" end cap
- wedge type connection"



diagrams of possible transformations

### MLF-101.3 (economy)



### Functional single-segment bed /

#### Technical characteristics :

Dimensions (W x H x D):	2160x995x900 mm
Bed with mattress :	2000x900 mm
Height of the bed from the floor : :	500 mm
Bed:	P-like laths (1 mm), 20 pcs.
Bed base:	- 50x25 mm profiled tube
Drive mechanism:	

\* Dimensions are given with bumpers and wheels

#### Optional :

- Mattress stops, bumpers
- end fence made of chipboard
- Ergonomic (curved) feet."
- Possible equipment : casters, mattress, side covers, infusion stand (tripod), gooseneck



diagrams of possible transformations

### MLF-101.1 (standard)





# MEDICAL BEDS

## SERIES: MLF

### Functional two-section bed

/

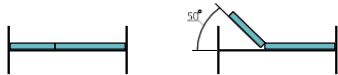
#### Technical characteristics :

Dimensions (W x H x D):	2160x995x900 mm
Bed with mattress :	2000x900 mm
Bed height from the floor : :	500 mm
Bed:	P-like laths (1 mm), 20 pcs.
Bed base:	50x25 mm profiled tube
Drive mechanism:	- comb (9 items)

\* Dimensions are given with bumpers and wheels

#### Optional :

- o mattress stops, bumpers
- o end cover made of chipboard
- o ergonomic (curved) feet, 125 mm casters (2 with brake)"
- o Possible equipment : casters, mattress, side covers, infusion stand (tripod), gooseneck



diagrams of possible transformations

### MLF-102.1 (standard)



### Functional two-section bed

/

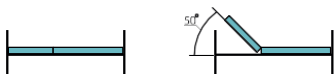
#### Technical characteristics :

Dimensions (W x H x D):	2160x995x900 mm
Bed with mattress :	2000x900 mm
Height of the bed from the floor : :	500 mm
Bed:	P-like laths (1 mm), 20 pcs.
Bed base :	- 50x25 mm profiled tube
Drive mechanism:	comb (9 items)

\* Dimensions are given with bumpers and wheels

#### Optional :

- o Mattress stops, bumpers
- o end fence made of chipboard
- o Ergonomic (curved) feet."
- o Possible equipment : casters, mattress, side covers, infusion stand (tripod), gooseneck



diagrams of possible transformations

### MLF-102.2 (standard)





# MEDICAL BEDS

## SERIES: MLF

### Functional two-section bed

/

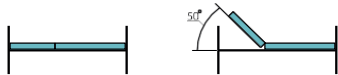
#### Technical characteristics :

Dimensions (W x H x D):	2160x995x900 mm
Bed with mattress :	2000x900 mm
Height of the bed from the floor : :	500 mm
Bed:	P-like laths (1 mm), 20 pcs.
Bed base :	50x25 mm profiled tube
Drive mechanism :	- comb (9 items)

\* Dimensions are given with bumpers and wheels

#### Optional :

- Ograniczniki materaca, zderzaki
- end cap made of perforated metal
- side fence (hinged) made of perforated metal
- Possible equipment : casters, mattress, side covers, infusion stand (tripod), gooseneck



diagrams of possible transformations

#### MLF-102.1 (standard)



### Functional two-section bed

/

#### Technical characteristics :

Dimensions (W x H x D):	2160x995x900 mm
Bed with mattress:	2000x900 mm
Bed height from the floor : :	500 mm
Bed:	P-like laths (1 mm), 20 pcs.
Bed base:	- 50x25 mm profiled tube
Drive mechanism:	worm gearbox (0-70)

\* Dimensions are given with bumpers and wheels

#### Optional :

- Mattress stops, bumpers
- end fence made of chipboard
- ergonomic (curved) feet, 125 mm casters (2 with brake)
- Possible equipment : mattress, infusion stand (tripod), goose holder



diagrams of possible transformations

#### MLF-102.2 (standard)





# MEDICAL BEDS

## SERIES: MLF

### Functional two-section bed

/

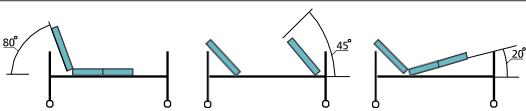
#### Technical characteristics :

Dimensions (W x H x D):	2160x995x900 mm
Bed with mattress:	2000x900 mm
Bed height from the floor: :	500 mm
Bed:	P-like laths (1 mm), 20 pcs.
Bed base:	50x25 mm profiled tube
Drive mechanism :	- comb (9 items)

\* Dimensions are given with bumpers and wheels

#### Optional :

- o mattress stops, bumpers
- o end cap made of perforated metal
- o side fence (hinged) made of perforated metal
- o Possible equipment : mattress, gooseneck



diagrams of possible transformations

### MLF-104.1 (standard)



### Functional two-section bed

/

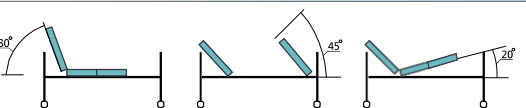
#### Technical characteristics :

Dimensions (W x H x D):	2160x995x900 mm
Bed with mattress:	2000x900 mm
Bed height from the floor: :	500 mm
Bed:	P-like laths (1 mm), 20 pcs.
Bed base:	- 50x25 mm profiled tube
Drive mechanism:	comb (9 items)

\* Dimensions are given with bumpers and wheels

#### Optional :

- o Mattress stops, bumpers
- o end fence made of chipboard
- o ergonomic (curved) feet, 125 mm casters (2 with brake)
- o Possible equipment : mattress, infusion stand (tripod), goose holder



schematy możliwych przekształceń

### MLF-104.1 (standard)





# MEDICAL BEDS

## SERIES: MLF

### Functional two-section bed

/

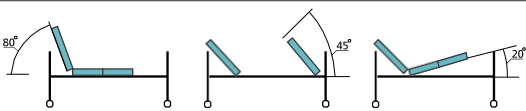
#### Technical characteristics :

Dimensions (W x H x D):	2160x995x900 mm
Bed with mattress :	2000x900 mm
Height of the bed from the floor : :	500 mm
Bed:	P-like laths (1 mm), 20 pcs.
Bed base:	50x25 mm profiled tube
Drive mechanism :	- worm gearbox (0-70)

\* Dimensions are given with bumpers and wheels

#### Optional :

- o mattress stops, bumpers
- o end cap made of perforated metal
- o side fence (hinged) made of perforated metal
- o Possible equipment : mattress



diagrams of possible transformations

### MLF-104.2 (standard)



### Functional two-section bed

/

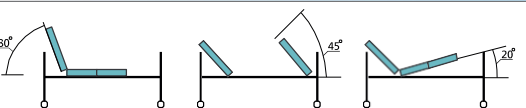
#### Technical characteristics :

Dimensions (W x H x D):	2160x995x900 mm
Bed with mattress:	2000x900 mm
Bed height from the floor: :	500 mm
Bed:	P-like laths (1 mm), 20 pcs.
Bed base:	- 50x25 mm profiled tube
Drive mechanism:	worm gearbox (0-70)

\* Dimensions are given with bumpers and wheels

#### Optional :

- o Mattress stops, bumpers, infusion stand (tripod)
- o End fence made of chipboard,
- o ergonomic (curved) feet, 125 mm casters (2 with brake)
- o Possible equipment : mattress, infusion stand (tripod), goose holder



diagrams of possible transformations

### MLF-104.2 (standard)





# MEDICAL BEDS

## SERIES: MLF

### Electric four-section bed /

The bed is designed for both standard and surgical wards and features electric adjustment of the back and hip segments, as well as height and angle adjustment via a multifunctional control panel. The frame is painted with white antibacterial powder paint, the bed is made of metal slats. The number of bed segments is 4 (including 3 movable). Width of the mattress base - 2000x850 mm. Adjustable height of the mattress platform: 390-890 mm. Safe working load - 250 kg. Back segment adjustment - 72°. Adjustment of the hip section - 40°.

#### The bed is ready :

- Wired control panel for the patient
- Reinforced metal side covers that can be easily folded away
- With central brake
- Universal accessory holders
- Removable panels at the headboard and base made of ABS plastic with mattress stops
- Plastic bumpers to prevent damage to corners and walls during transport
- Lever to facilitate urgent cardiopulmonary resuscitation
- Orthopedic mattress with waterproof cover
- Spare set of batteries
- 

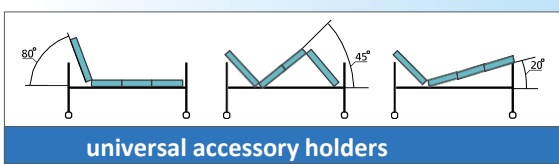
#### Technical characteristics :

Dimensions (W x H x D):	2160x995x900 mm
Bed with mattress :	2000x900 mm
Height of the bed from the floor :	500 mm
Bed:	P-like laths (1 mm), 20 pcs.
Bed base:	50x25 mm profiled tube
Drive mechanism:	worm gearbox (0-70)



\* Dimensions are given with bumpers and wheels

- Optional :
- removable panels at the top and bottom
- wired remote control
- universal accessory holders

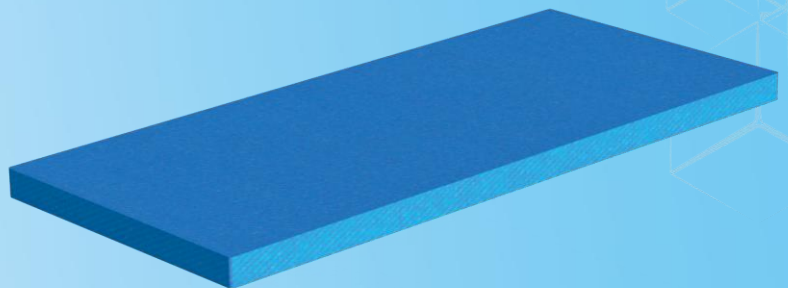


## Medical Mattress (Pro) /

### Technical characteristics :

Dimensions (W x H x D):	2000x100x900 mm
Number of sections	1-4
Filler:	foam rubber, kg/m.cub: 35
Cover material	membrane fabric
Color:	blue

MM-101.2



## Tripod for long-term infusions /

### Technical characteristics :

Dimensions (W x H x D):	2000x100x900 mm
Five-way base :	diameter 550 mm
Material:	stainless steel

SHV-102.1

### Additionally :

- o casters - D50 mm (2 with brake, 2 without brake)





## SECTION 2: MEDICAL CABINETS





## Medical cabinets

Medlabsolution medical bedside cabinets are an essential piece of furniture that can be used in a hospital ward or a simple clinic. We manufacture two types of cabinets: ward cabinets for patients and office cabinets for medical staff.

Our cabinets can easily accommodate patients' personal belongings, medicines, personal hygiene products, etc. A hook on the side wall helps solve the problem of placing a towel, which will always be at hand. Considering the bed rest of some patients, the height of the shelves at bed level allows them to have access to the necessary things without getting out of bed.

Metal cabinets from Medlabsolution are roomy and durable. The special hypoallergenic lacquer coating of the cabinet withstands daily cleaning and disinfection.

## Mobile medical cabinets on wheels

On the medical furniture market, hospital cabinets are available in several configurations.

Before buying, we recommend that you decide on the overall dimensions of the products, the internal filling and the presence of casters. Mobile cabinet models from Medlabsolution are more convenient for both wards and rooms, such as nursing or handling rooms. They can be easily transported from place to place, moved for cleaning and quickly transferred to another room.

When choosing the right model of medical cabinet, the material from which it is made is important. Our models are made of powder-coated metal and have the following advantages they are not afraid of wet cleaning; they do not have a definite lifespan; they have a reliable, solid construction; they do not lose their appearance during operation.



### Bedside table (with open top shelf) /

#### Technical characteristics :

Dimensions (W x H x D):	450x750x400 mm
Body, facades, shelves	sheet
Table top:	metal
Shelf:	niewsuwalny
Handles:	128 mm
Coating texture	matt

#### Additionally :

- o height-adjustable feet

PT-101.1



### Bedside table (with recess and drawer) /

#### Technical characteristics :

Dimensions (W x H x D):	450x750x400 mm
Body, facades, shelves	sheet
Table top:	metal
Shelf :	indelible
Handles:	128 mm
Coating texture	matt

#### Additionally :

- o height-adjustable feet

PT-102.1



### Bedside table (with drawer, on wheels) /

#### Technical characteristics :

Dimensions (W x H x D):	450x750x400 mm
Body, facades, shelves	sheet
Table top:	metal
Shelf:	indelible
Handles:	128 mm
Coating texture	matt

#### Additionally:

- o casters - D50 mm (2 with brake, 2 without brake)

PT-103.2



## Mobile cabinet (with three drawers) /

### Technical characteristics :

Dimensions (W x H x D):	450x750x400 mm
Body, facades, shelves	sheet
Table top:	telescopic slides
Shelf:	sheet
Handles:	128 mm
Coating texture	mat

### Additionally :

- o casters - D50 mm (2 with brake, 2 without brake)

MTM-101.1



## Mobile cabinet (with 4 drawers) /

### Technical characteristics :

Dimensions (W x H x D):	450x750x400 mm
Body, facades, shelves	sheet
Table top:	telescopic slides
Shelf:	sheet
Handles:	128 mm
Coating texture	mat

### Additionally :

- o casters - D50 mm (2 with brake, 2 without brake)

MTM-101.2





---

# SECTION 3: MEDICAL CABINETS

---



## Medical cabinets

The medlabsolution medical cabinet is a specialized structure used by medical, perioperative or rehabilitation centers, private practices, hospitals, clinics, dentists and other medical institutions. They are used to store medicines, dressings, patient records, doctors' change of clothes and other storage needs in medical facilities. We manufacture medical cabinets of various types.

The main differences between the designs are the dimensions, the thickness of the metal used and the internal filling. Depending on the model, the cabinet can be equipped with shelves, partitions, hangers or hooks. A cabinet with a safe is used for storing strictly specified drugs, such as narcotic or psychotropic substances. It is equipped with an anti-theft lock and cannot be opened with hand tools or knocked out.

### What are the advantages of MLS steel medical cabinet?

- resistant to moisture and disinfectants, making it easy to clean, process and maintain in accordance with the requirements of the Ministry of Health;
- securely locks and protects important documents or medications from unauthorized persons; it requires no special care and will last longer than particle board and wooden analogs;
- Can be used in any room, regardless of temperature and humidity levels; wide range of sizes at affordable prices.

We manufacture medical cabinets from steel. The thickness of the metal depends on the model. Powder coating in various colors changes the appearance of the product and protects the metal from corrosion. Budget models are equipped with flag or bolt locks.

If you need a custom design or want to install an electronic combination lock, we can manufacture custom medical cabinets of any complexity.

### Medical cabinet for medicines (with glass doors) /

#### Technical characteristics :

Dimensions (W x H x D):	500x1600x400 mm
Body, doors:	0.9 mm steel sheet
Shelves in the lower part:	0.9 mm steel sheet
Upper section door:	4 mm glass
Handles:	128 mm
Shell texture:	mat

#### Additionally :

- equipment: two sections, both lockable
- 2 height-adjustable shelves in each section
- the cabinet is mounted on brackets made of 20x20 mm profile tube and has height adjustment up to 20 mm

**Possible equipment :** can be equipped with a safe (marker)

### SHML-102



### Medical cabinet for medicines (metal door) /

#### Technical characteristics :

Dimensions (W x H x D):	900x1600x400 mm
Body, doors:	0.9 mm steel sheet
Shelves in the lower part:	0.9 mm steel sheet
Paint: :	RAL 9003 (powder)
Handles:	128 mm
Shell texture:	mat

#### Additionally :

- equipment: two sections with 4 lockable doors
- 2 height-adjustable shelves in each section
- is mounted on brackets made of 20x20 mm profile tube and has height adjustment up to 20 mm

**Possible equipment :** can be equipped with a safe (marker)

### SHML-104



## Medical supply cabinet /

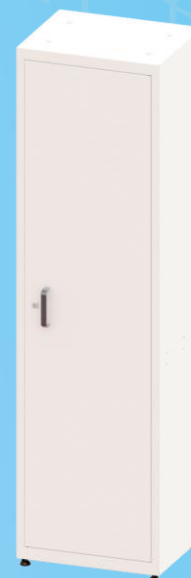
### Technical characteristics :

Dimensions (W x H x D):	500x1800x400 mm
Body, doors:	0.9 mm steel sheet
Shelves in the lower part:	0.9 mm steel sheet
Paint: :	RAL 9003 (powder)
Handles:	128 mm
Shell texture:	matt

### Additionally :

- o equipment: one lockable section
- o The cabinet has 3 shelves, the height of which is not adjustable
- o The cabinet is mounted on adjustable feet and has a height adjustment range of up to 20 mm

## SHMI-102



## Medical supply cabinet /

### Technical specifications :

Dimensions (W x H x D):	900x1800x400 mm
Body, doors :	0.9 mm steel sheet
Shelves in the lower part :	0.9 mm steel sheet
Farba:	RAL 9003 (powder)
Handles:	128 mm
Shell texture:	matt

### Additionally:

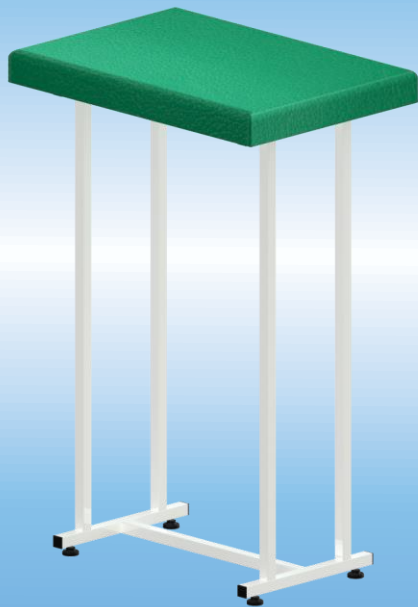
- o equipment: two lockable sections
- o shelves in the cabinet, the height of which is not adjustable
- o The cabinet is mounted on adjustable feet and has a height adjustment range of up to 20 mm

## SHMI-104





# SECTION 4: MEDICAL TABLES





## Medical tables

The work of a medical institution is impossible without a specialized medical table manufactured by medlabsolution, which is used by doctors and junior staff. Our offer includes medical tables of various models. There are mobile designs for delivering medicines to wards, compact tables and large designs for nursing stations or for surgical operations.

### Types of medical tables according to their purpose:

- **Instrumental** - for placing sterile instruments necessary for the work of a doctor, for example, a dentist, anesthesiologist, ENT or ophthalmologist;
- Handling rooms - for storing drugs and supplies in handling rooms or dressing rooms;
- Universal - for arranging the workstation of a doctor or nurse;
  
- Surgical - used in surgical devices and working tools.

Structures should be stable, reliable, durable, of convenient height and maneuverable if necessary. The material should be easy to clean and safe to use.

We produce ergonomic structures that have proven their high quality and convenience in many hospitals in Ukraine. Our products are made of painted or stainless steel, with high-quality hardware.

# MEDICAL TABLES

## SERIES: SZK-PSY

### Medical table for taking blood samples (reinforced) /

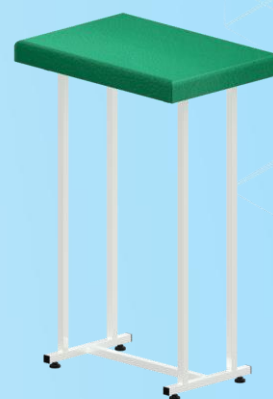
#### Technical specifications :

Dimensions (W x H x D):	550x900x370 mm
Coating:	vinyl leather/membrane fabric
Frame:	20x20 mm profiled tube
Construction:	welded/dismantled
Work surface base : :	16 mm chipboard
Foam rubber : :	20 mm

#### Additionally :

- o RAL 9003 polyester powder paint
- o matte texture
- o height-adjustable feet

SZK-101.2



### Medical ward table (6-seater) /

#### Technical specifications :

Dimensions (W x H x D):	1200x750x600 mm
Ramka:	25x25 mm profiled tube
Table top :	16 mm particleboard/MDF 16 mm
Along the perimeter of the worktop	1 mm plastic coating
Coating texture :	PVC 2 mm
Number of seats:	6

#### Additionally :

- o Polyester powder paint RAL 9003
- o The legs are not adjustable

PS-102



## Table for medical instruments (with 3 shelves) /

### Technical specifications :

Dimensions (W x H x D):	720x860x430 mm
Frame:	20x20 mm profiled tube
Removable shelves :	made of 5 mm tempered glass
Cornersk:	steel sheet 15x15 mm
Coating texture	matt
Number of shelves:	3

### Additionally :

- o RAL 9003 polyester powder paint
- o D50 mm casters (2 with brake, 2 without brake)

SI-102.1



## Table for medical instruments (with 2 shelves) /

### Technical specifications :

Dimensions (W x H x D):	720x860x430 mm
Frame:	20x20 mm profiled tube
Shelf material :	tempered glass
Shelves:	non-removable with sides made
Shelf stops	steel square 10x10 mm
Number of shelves	2

### Additionally :

- o RAL 9003 polyester powder paint
- o D50 mm casters (2 with brake, 2 without brake)

SI-103.1



### Medical manipulation table (box + shelf) /

#### Technical characteristics :

Dimensions (W x H x D):	720x860x430 mm
Frame:	20x20 mm profiled tube
Shelf material :	stainless steel
Shelves:	non-removable
Guides:	telescopic
Pens:	128 mm

#### Additionally :

- Polyester powder paint RAL9003
- matte texture
- D50 mm castors (2 with brake, 2 without brake)

MC-101.2



### Medical surgical table /

#### Technical characteristics:

Dimensions (W x H x D):	650x800-1300x450 mm
Dimensions of the tabletop	600x430 mm
Frame:	stainless steel pipe 20x20 mm
Countertop:	stainless steel
Height adjustment:	screw
The texture of the coating:	matte

#### Additionally :

- polyester powder paint RAL9003
- matte texture
- rollers D50 mm (with brake)

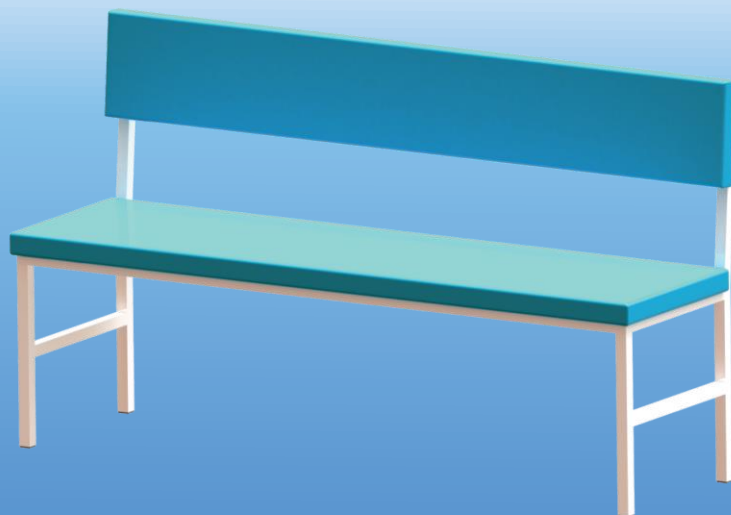
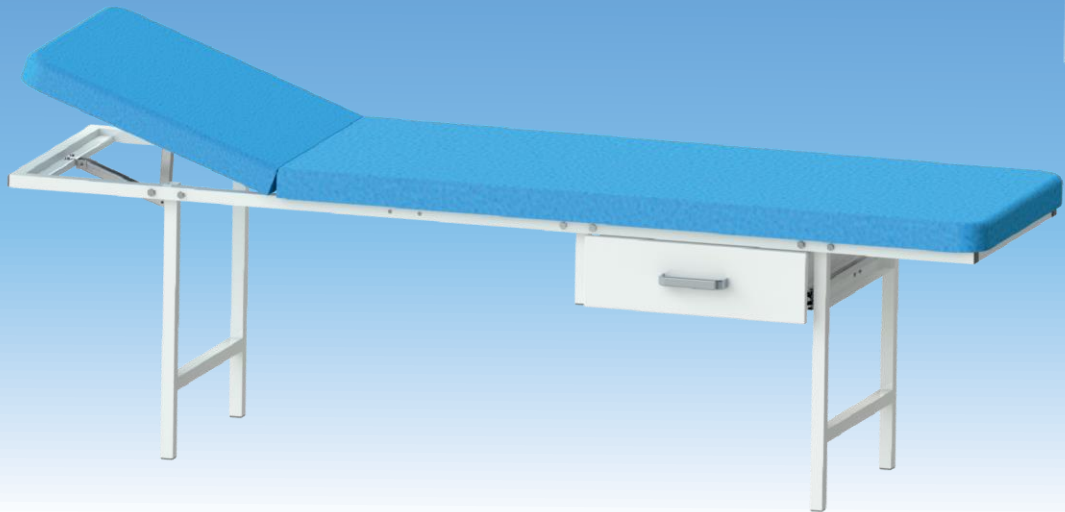
CA-101.3







# SECTION 5: COUCHSURFERS AND MEDICAL BANQUETS



## Medical couches

The medlabsolution adjustable headrest (RHRC for short) is used for various manipulations in treatment rooms. Proper positioning of the patient on the couch simplifies the work of the staff and reduces patient discomfort. The couch of our production consists of a stable, sturdy frame and a soft bed. For the frame, we use a steel profile or tube that can withstand a load of up to 200 kg. The bed consists of two parts covered with vinyl leather, which can be disinfected. The height of the headrest can be adjusted using the "Comb" or "Rastomat" mechanism. Models with a drawer on telescopic rails for tools and a towel holder are also available. The range includes several upholstery colors, which can be selected to match the color of the medical facility's interior.

## Medical banquetts

The medical banquette is an expression of patient care on the part of the medical establishment. It is a comfortable seat, designed for 3 people in the standard version. Banquette is installed in the lobby or corridors of hospitals, as well as near specialist offices.

We have models with a backrest and in the form of benches with a soft seat with leather upholstery. Such designs make it possible to create a cozy and comfortable waiting room for patients in hospitals, doctors' offices, diagnostic centers, research facilities, first aid stations, clinics and private dental offices.



# SOFAS AND BANQUETS

## SERIES: KPM-BM

### Medical procedural couch (Rastomat) /

#### Technical Specifications :

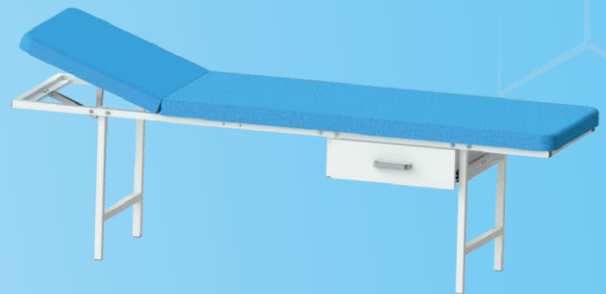
Dimensions (W x H x D):	2000x600x560 mm
Frame:	20x20 mm profiled tube
Coating:	ecological leather
Bed base:	MAIN PLATE.
Filling:	40 mm foam rubber
Lifting mechanism	Rastomat.

KPM-101.1



#### Additionally :

- o Lifting mechanism "Rastomat" with the possibility of changing the angle of inclination up to 45 degrees



### Medical couch (comb with drawer) /

#### Technical specifications :

Dimensions (W x H x D):	2000x600x560 mm
Frame:	25x25 mm profiled tube
Coating:	ecological leather
Bed base:	MAIN PLATE.
Filling:	40 mm foam rubber
Lifting mechanism	" Grebinka"

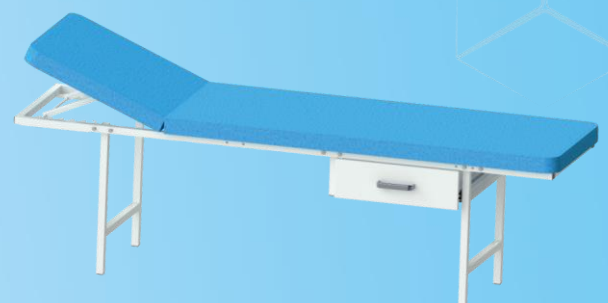
KPM-103.1



#### Additionally :

- o Frame coating - polyester powder paint RAL 9003 matte
- o texture

**Equipment.** : 1 drawer made of metal on telescopic rails, towel holder. Steel towel holder 10x10 mm, handle 128 mm, plastic caps





## Medical banquet (3-seater without backrest) /

### Technical specifications :

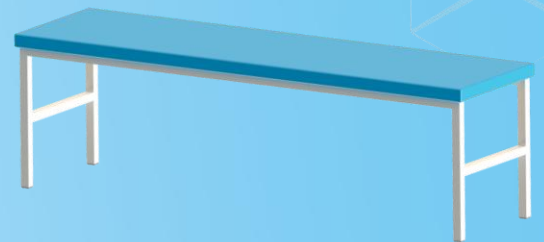
Dimensions (W x H x D):	1500x450x400 mm
Frame:	25x25 mm profiled tube
Bed base :	MAIN PLATE.
Filler:	20 mm foam rubber
Plugins	plastic
Coating:	ecological leather

BM-103.1



### Additionally :

- Frame coating - polyester powder paint RAL 9003
- matte texture



## Medical banquet (3-seater with backrest) /

### Technical specifications :

Dimensions (W x H x D):	1500x850x400 mm
Frame:	25x25 mm profiled tube
Bed base:	MAIN PLATE.
Filler:	20 mm foam rubber
Plugins	plastic
Coating:	ecological leather

BM-103.2



### Additionally :

- frame coating - polyester powder paint RAL 9003
- matte texture





# SECTION 6: MEDICAL ACCESSORIES



## Medical steps

Medical stairlifts are special-purpose products used for the convenience of medical personnel during various medical and diagnostic procedures, as well as for lifting or lowering patients during certain procedures.

## Screens

The medical screen is designed to divide (zone) a room during examinations or other procedures in medical, health care and preventive care facilities, and is also widely used in massage parlors and beauty salons.

In cases where it is necessary to zone the space, protect the patient from prying eyes and organize the work of several specialists.

## First aid kits

The medical first aid kit is designed for storing first aid medicines in clinics, health care facilities, various institutions and organizations. It is a compact design with a lockable door.

The hinged medicine cabinet allows you to store a large number of medicines, keep them in order, and such a medicine cabinet is also convenient to use - it has a large capacity, protects medicines from sunlight, dust and heat.

### Stand for washbasin (2 washbasins) /

#### Technical characteristics :

Dimensions (L x W x H):	660x900-1300x550 mm
Base and frame:	stainless steel
Pelvic material:	polished stainless steel
Number of pelvises:	2 pcs.

#### Additionally :

- o height adjustable
- o D50 mm rollers

PPT-102. 1



### Boxing stand /

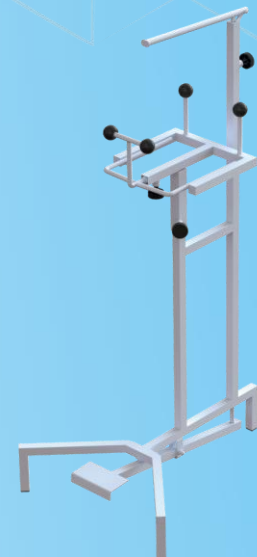
#### Technical characteristics :

Dimensions (L x W x H):	455x1085x575 mm
Box diameter	240-395 mm
Box capacity:	6-18 liters
Coating texture	matte

#### Additionally :

- o opening/closing the box lid - by pressing the foot pedal
- o Height adjustment mechanism, mechanism to prevent the box from possibly tipping over when the lid is opened
- o Frame coating - polyester powder paint RAL 9003
- o matte texture

PPB-101



## Medical screen (3 sections) /

### Technical characteristics :

Dimensions (L x W x H):	2250x1800x500 mm
Frame:	round pipe D-18
Shell Texture: :	Matte
Screen:	fabric

### Additionally :

- Frame coating - polyester powder paint RAL 9003
- D50 mm rollers

SHM-101



## Medical kit /

### Technical characteristics :

Dimensions (L x W x H):	300x400x150 mm
Body:	sheet
Doors:	The glass can be locked with a padlock
Frame coverage:	RAL 9003 powder paint
Shell texture:	Matte

### Equipment :

- 2 shelves are removable, non-adjustable in height
- The possibility of mounting on a wall or placing on a surface is provided

AM-101



### Table cart (for food) /

#### Technical characteristics :

Dimensions (L x W x H):	800x850x500 mm
Table:	stainless steel
Frame:	welded from rectangular steel pipes 25x25x1.5 mm and sheet metal elements

#### Additionally :

- o cart is equipped with two shelves made of sheet metal, 2 handles on the sides for easy movement
- o Each shelf has a protective barrier on the sides
- o possible production for individual orders

SV-101



### Medical laundry cart /

#### Technical specifications :

Dimensions (L x W x H):	1080x100x590 mm
Frame	Tubes in the shape of 25x25 and 20x20 mm
Shelf material	0.8 mm steel sheet
Shell texture:	matt

#### Additionally :

- o Frame coating - polyester powder paint RAL 9003
- o Castors D100 mm (2 with brake)

**Equipment :** includes a bag made of thick material, attached to the frame at the top

VBM-101



## Medical step (single) /

### Technical specifications :

Dimensions (L x W x H):	350x250x200 mm
Frame:	20x20 mm profiled tube
Coating:	ecological leather
Filler: :	10 mm foam rubber
Project version :	one step
Frame Coverage:	RAL 9003 powder paint

CXM-101.1



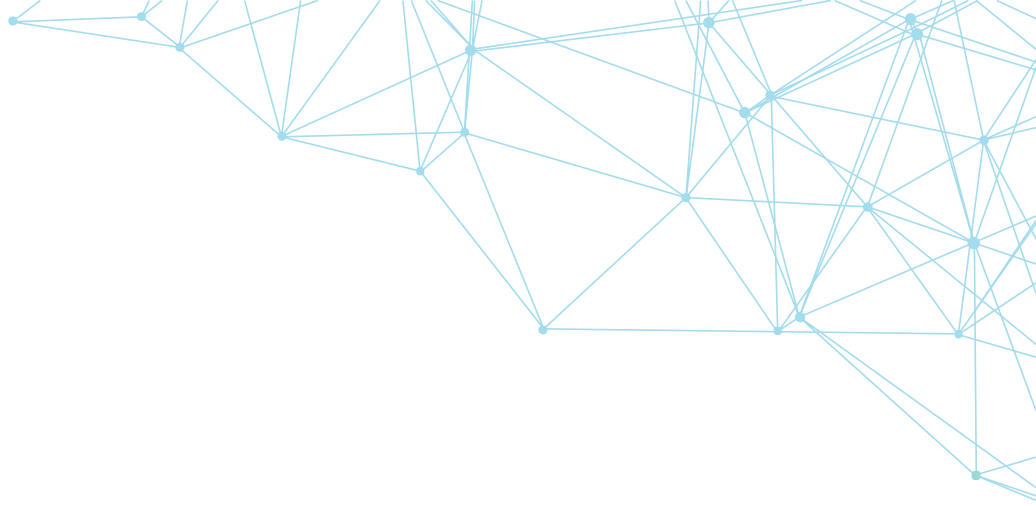
## Medical grade (dual) /

### Technical specifications :

Dimensions (L x W x H):	400x400x250 mm
Frame:	25x25 mm profiled tube
Coating:	ecological leather
Filler:	10 mm foam rubber
Project version :	two steps
Frame Coverage:	RAL 9003 powder paint

KPM-103.1





## Contacts:



Lviv, Zelena St, 149, bild 8a, 79035.  
Kraków, ul. Zamknięta 10/lok. 1.5, 30-554



+48-45-95-68-856



[info@ipcom-group.pl](mailto:info@ipcom-group.pl)